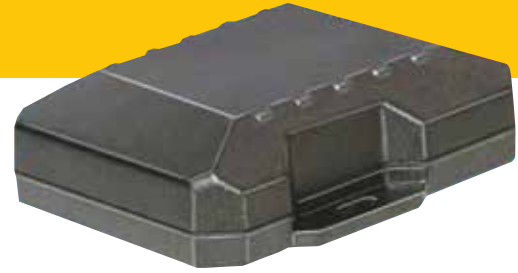


Sure-Track ST2750

The Sophisticated Tracking and Recovery Solution



The Sure-Track ST2750 is an economical, fully sealed vehicle tracking product designed for easy and reliable installation in recreational vehicles and assets with outdoor exposure. The ST2750 is an ideal solution for asset monitoring and theft recovery for plant machinery and outdoor vehicles.

Suitable For:-

- + Construction Plant
- + Commercial Fleets
- + Generators & Welfare units
- + Agricultural Equipment
- + Bespoke Theft Applications

Installation & Power

The ST2750 is a wired-in unit with built in cellular, GPS and RF antennas to help aid easy installation. In the event of the asset being disconnected from its mains power the unit will alert you and switch backup battery.

Inputs & outputs

- + 5 Digital Inputs for ancillary devices - to record when an attachment is operating.
- + 3 Digital Outputs to allow remote access to the asset via the unit i.e. Immobilisation
- + 1 wire interface allows data to be sent from the asset to the platform via the unit i.e. temperature sensors or Dallas key for driver identification
- + 2 Serial Interfaces for NMEA data
- + 2 Analogue Inputs
- + jPOD Truck ECU Interface
- + Garmin FMI compatible interface

Specifications

- + Dimensions :115 x 95 x 30 mm
- + Weight:105g
- + Temperature Range: - 30°C to + 75°C

Configuration

The ST2750 can be configured when powered to send information anywhere between once a day to once a minute depending upon your requirements.

All configuration and update requests can be carried out over air using SMS and GPRS making it easy to change settings and update firmware.

24/7 Monitoring Subscription Service Features

- + GSM Location Positions
- + Finder Network
- + Unauthorised Movement & Tamper
- + European Cover

Finder Network (included in subscription service)

In the event of a theft, we will handle the whole process for you liaising with the police and arranging for a member of our finder network to attend site and locate the unit. Once the unit is located we will contact you to arrange for collection.

Features

ST2750 The Sophisticated Tracking and Recovery Solution

- + Telematics and asset recovery
- + GPS, GSM and RF combined technologies
- + Immobilisation
- + 24/7 UK monitoring station
- + Geofence technology
- + IP68 robust & waterproof casing
- + Nationwide finder network
- + Movement & tamper alarm
- + Utilisation reporting
- + 91% recovery rate within 9 hours

SPECIFICATION

ST2750 The Sophisticated Tracking and Recovery Solution

ST2750 Specifications

Communication Modes	GPRS/EDGE/HSPA and CDMA 1xRTT packet data, UDP and SMS
Location Technology	56 channel GPS
Operating Voltage	12 and 24 volt vehicle systems

GPS Specifications

Location Technology	GPS; GLONASS and QZSS capable
Enhancement Technology	SBAS: WAAS, EGNOS, MSAS, GAGAN
Receiver Type	56 channels
Tracking Sensitivity	-162 dBm
Acquisition Sensitivity	-148 dBm
Location Accuracy	2.0m CEP
Location Update	Rate up to 10 Hz
Anti-jamming	
AGPS / Location assistance capable	

Cellular Specifications

Data Support	SMS, UDP packet data	
Operating Bands (MHz band)		
GSM/GPRS	850/900/1800/1900	
CDMA/1xRTT	850/1900	
HSPA/UMTS	850/1900	
Transmitter Power		
GSM/GPRS	850/900	32.5 dBm
	1800/1900	29.3 dBm
CDMA/1xRTT	850	24 dBm
	1900	23 dBm
HSPA/UMTS	850/1900	23 dBm
HSPA data rates	5.6 Mbps up / 7.2 Mbps down	
HSPA Fallback	EDGE/GPRS/GSM quad band EDGE MCS1-MCS9 3GPP Release 6	
LTE	700/800/850/1700/1800/1900/2600 MHz (depending on configuration) Downlink up to 5 Mbps (peak burst rate) Uplink up to 5 Mbps (peak burst rate) Fallback to HSPA/CDMA (depending on configuration)	

Comprehensive I/O

Digital Inputs	5 (1 fixed bias low, 4 programmable bias)
Digital Outputs	3 relay driver outputs (200mA)
Serial Interface	2 power TTL ports
Analog Inputs	2 (1 interval VCC monitor, 1 external A/D input)
1-Wire® Interface	Driver ID, temperature sense
Status LEDs	GPS and cellular

Environmental Specifications

Temperature*	-30° to +75° C (connected to primary power) -40° to +85° C (storage) Except Battery*
Humidity	95% R.H. @ 50°C non-condensing
Shock & Vibration	SAE J1455
EMC/EMI	SAE J1113; FCC-Part 15B; Industry Canada; RoHS Compliant

Physical Specifications

Dimensions	3.684 x 2.002 x 0.775", (93.57 x 52.88 x 19.68mm)
Weight	2.4oz, (68.03g)

Mounting

Tie-wrap, adhesive, or velcro Screw mounting bracket

Connectors, SIM Access

Connection Type	20-pin Molex-type or captive 2,6 or 10-wire harness
GPS Antenna	External SMA or internal (w/ tamper monitoring, 3V)
Cellular Antenna	External SMC or internal
SIM Access	Internal (except CDMA)

Certifications

Fully certified FCC, CE, IC, PTCRB, Applicable Carriers

Electrical Specifications

Operating Voltage	7-32 VDC (momentary) 9-30 VDC (start-up, operating)
Power Consumption	<3 mA @ 12V (deep sleep) <10mA @ 12V (sleep on network with SMS) <20mA @ 12V (sleep on network with UDP) <70mA @ 12V (active tracking)
Back Up Battery (Optional)	Lithium-Ion 200mAh or 1000mAh (See technical specifications online for operational temperature impacts)

Development Support Options

Customised hardware and software development available on request